



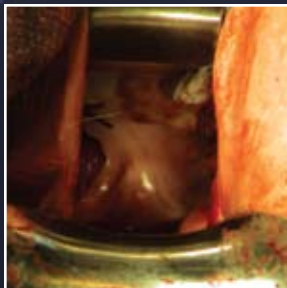
# LightMat<sup>®</sup>

SURGICAL ILLUMINATOR  
Lumitex MD<sup>®</sup>

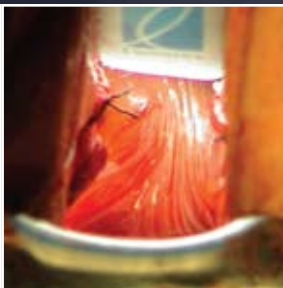
## Improve visualization inside the surgical site

Lumitex<sup>®</sup> LightMat<sup>®</sup> Surgical Illuminator attaches easily to most retractors, bringing bright, cool area lighting where it's needed – inside the surgical cavity.

- Cool light may be inserted directly into the surgical site, including deep cavities, small openings, under flaps, and in lateral margins.
- Flexible LightMat conforms to your existing retractors or other instruments, attaches easily, maintains a low profile.
- Shadowless, bright, continuous area lighting improves visualization, especially when working in teams.
- Helps save time, minimize blood loss, and navigate sensitive areas.
- Latex-free.
- Attaches to standard OR light sources.
- Improves surgeon's mobility.



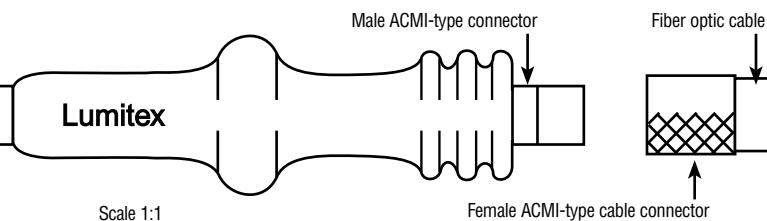
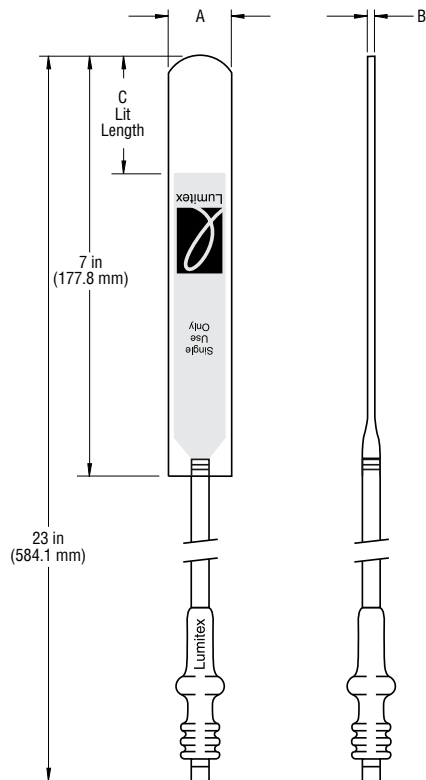
View without LightMat



View with LightMat

*“We all know that traction/counter-traction and visualization are the keys to success in surgery. This LightMat makes visualization so much easier in deep cavities. I find it saves significant time and ultimately leads to safer, more efficient surgery.”*

William B. Saye, M.D., F.A.C.O.G., F.A.C.S.



Scale 1:1

Female ACMI-type cable connector

Order No.	Description	A	B	C
UA2550	LightMat Ultra-Thin Flexible (box of 5)	0.6 in (15.2 mm)	0.06 in (1.5 mm)	2 in (50.8 mm)
SA3550	LightMat Standard Flexible (box of 5)	1.1 in (27.9 mm)	0.17 in (4.3 mm)	2 in (50.8 mm)
TA2334	LightMat Thin Malleable (box of 5)	0.6 in (15.2 mm)	0.16 in (4.1 mm)	1 in (25.4 mm)
004804	LightMat Standard (box of 5)	1.1 in (27.9 mm)	0.2 in (5.1 mm)	2 in (50.8 mm)

LightMat Fiber-Optic Cables: ACMI Part# 005011  
 Olympus Part# 005365  
 Storz Part# 005366  
 Wolf Part# 005757

Order No.	Description	A	B	C
MM1462	MicroBright* (box of 5)	0.4 in (10.2 mm)	0.15 in (3.8 mm)	1.25 in (31.8 mm)

\*MicroBright requires a special cable connection different from the LightMats above.

MicroBright Fiber-Optic Cables: ACMI Part# 006241  
 Olympus Part# 006424  
 Storz Part# 006422  
 Wolf Part# 006423

Distributed by:

## Device Description:

The LightMat® is a disposable, single-use-only device, designed to provide cool, bright area illumination for improved visualization within surgical cavities.

The LightMat is a flexible, acrylic fiber optic panel that attaches to most surgical retractors using biocompatible, two-sided adhesive (included in each sterile pouch). It can also be attached to suction devices or other instruments, or used independently, conforming to the surgical site. Attach when the surgical instrument is clean and dry.

For use in surgical specialties of gynecology, general surgery, colorectal surgery, plastic surgery, orthopedic surgery, spinal surgery, cranio-maxillo-oculo-facial surgery, oral surgery, urology and ENT. It is not recommended for intracranial surgery.

## Technical Information:

- Sterile, single use only.
- Latex-free.
- Light source: Xenon 300 watt maximum or Metal Halide equivalent. See Instructions For Use.
- Cable: 4 mm with female ACMI-type connector (see diagram at left).
- MicroBright cable: 2.5 mm with custom connection type (see MicroBright cable at left).
- Dimming overhead lights may improve visualization.
- Attach to clean, dry instrument with logo (lit) side facing surgical site.

Consult product inserts and labels for indications, contraindications, hazards, warnings, cautions, and Instructions For Use.

**For more information on LightMat, please contact your Lumitex representative.**



Manufactured by Lumitex, Inc.  
 8443 Dow Circle • Strongsville, OH 44136  
 Phone: (440) 243-8401 • (800) 969-5483  
 Fax: (440) 243-8402  
 E-mail: medical@lumitex.com  
 www.lightmat.com

© 2004 Lumitex, Inc. Lumitex is a registered trademark of Lumitex, Inc.  
 LightMat is a registered trademark of Lumitex, Inc. Lumitex products are protected by U.S. and foreign patents and patents pending.  
 ISO 13485 Reg. No. SX 60013530 0001 CE Reg. No. HD 60008817 0001  
 Bulletin 004779 Rev. K 9/09

